

**Standard  
Black**

# Moulded Backless Bench Assembly Instructions

PLEASE READ THESE INSTRUCTIONS CAREFULLY AND FOLLOW THE ASSEMBLY DRAWINGS.  
WE WILL NOT ACCEPT ANY CLAIMS IF THIS PRODUCT IS WRONGLY ASSEMBLED.

## Parts Supplied

- a) 2 × Leg frames
- b) 4 × Seat slats [numbered 1 to 4]
- c) 12 × 90mm long screws
- d) 4 × 70mm long screws

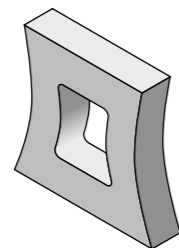
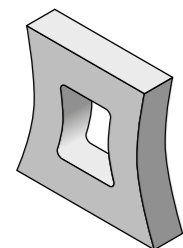
## Tools Required

- Power drill with Philips screwdriver bit
- Measuring tape
- Straight edge

**2 Person Operation**

All seat slat labels should face upward and be on the left-hand side when assembled.

**1.**

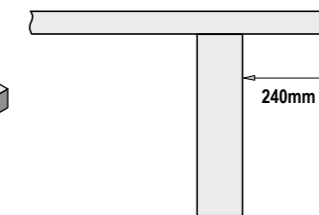
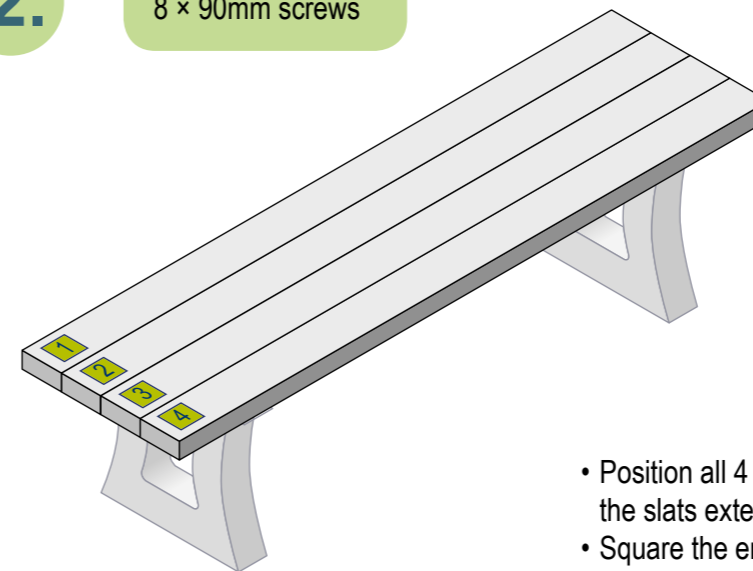


2 × Leg frames

- Stand the moulded leg frames upright on a flat surface.

**2.**

3 × Seat slats  
4 × 70mm screws  
8 × 90mm screws



- Position all 4 seat slats centrally on the frames with the slats extending 240mm on either side.
- Square the ends with a straight edge.
- Fix the outer 4 holes with 70mm screws.
- Ensure that the frames are square by measuring across the diagonals. The diagonals should measure the same.
- Fix the remaining holes with 90mm screws.

